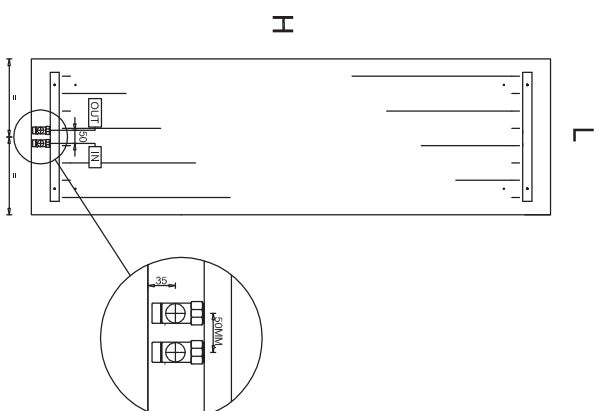
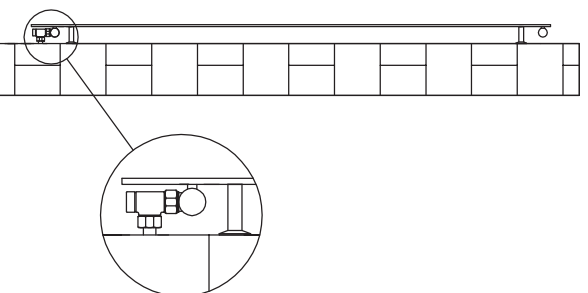
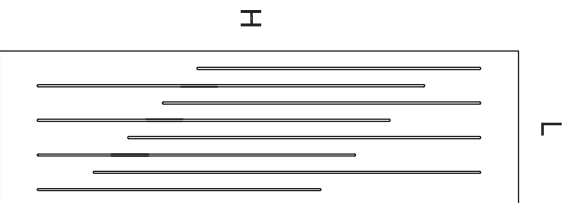


# VERSIONE IDRAULICA-HYDRAULIC VERSION

# RAINO



Altezza mm. Height mm.	Larghezza mm. Width mm.	Potenza Watt $\Delta T 50^\circ$ Power Watt $\Delta T 50^\circ$	Contenuto Acqua Lt Water Content Lt
1500	500	687	0,83
1500	600	825	0,85
1800	500	825	0,90
1800	600	990	0,92
2000	500	917	0,95
2000	600	1100	0,97

\*. Le rese sono calcolate ed in fase di certificazione, potenza calcolata  $\Delta T 50^\circ C$ .  
 \*\*Yields have been estimated and waiting for certification, estimated power  $\Delta T 50^\circ C$

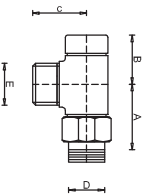
## CARATTERISTICHE TECNICHE:

Corpo scaldame interamente in alluminio  
 circolazione fluido vettore in rame  
 collettori di distribuzione in acciaio.  
 Temperatura massima d' esercizio  $95^\circ C$ .  
 Pressione massima d' esercizio 15 bar.  
 Verniciatura a polveri ipossidiche ecologiche  
 20 gloss di brillantezza.

## TECHNICAL FEATURES

Aluminium body, copper circuit for fluid circulation  
 steel distribution manifolds.  
 Maximum working temperature  $95^\circ C$   
 Maximum working pressure 15 bar  
 Ecological epoxy resin painted, mat (20 gloss)

## VALVOLE DI COLLEGAMENTO - CONNECTION VALVES



D	A	B	C	E
1/2"	41	32	26	24X19